



**HAVAL**  
Global Intelligent SUV Expert



**P-SERIES**

---

**PASSENGER DOUBLE CAB**

# IT'S MORE THAN A MACHINE.



## STEP RIGHT UP.

Conquer the load. Conquer the journey in the all-new, all-conquering GWM P-Series Passenger Double Cab. The GWM P-Series Passenger Double Cab is a brand-new addition to the range of strong, reliable and “workaholic” GWM bakkies that are built for true adaptability.

## SAFETY

A bakkie that has the right amount of muscle, safety and performance to tackle any task.

## FEATURES

The GWM P-Series Passenger Double Cab has been designed to impress with features that make this road warrior stand tall above the rest.



## PERFORMANCE

Features a responsive ZF 8AT speed gearbox, multi-link rear suspension and is powered by a diesel engine with a mighty 120kW and 400n.m of torque.

## STYLE

The sturdy chrome-plated grille, sharp eagle-eye headlights and muscular body lines make this bakkie the ultimate performance conqueror.



### MUSCLE.

This mighty bakkie has the right amount of muscle, safety and performance to tackle any task. Packed with 400n.m of torque and 120kW of power that works harder for you.



### PERFORMANCE.

The GWM P-Series Passenger Double Cab features a responsive ZF 8AT gearbox, multi-link rear suspension and is powered by a mighty diesel engine.



### CONSTRUCTION.

The GWM P-Series Passenger Double Cab has been constructed with you the passenger in mind. Boasting a high strength ladder frame and armour body design, because safety is our priority.

## SEEING IS BELIEVING.

To help observe your surroundings and avoid cross collisions, the GWM P-Series Passenger Double Cab has four high-definition cameras that project 360 degree views and rear cross traffic alert that gives you full confidence and extra peace of mind.



## LED HEADLAMP AND DAYTIME RUNNING LAMP.

The LED headlamp help make things brighter when driving and the design is carried out through to the back with attractive taillights.

The daytime running lamp (DRL) help make surrounding objects and vehicles more visible in low light situations with advanced visual effects.



## FROM STRENGTH TO STRENGTH.



Once you get in, you are now prepped for an extraordinary drive in this rugged bakkie, perfectly primed for South African roads, rough or smooth.





### CONNECT INTELLIGENTLY.

The GWM P-Series Passenger Double Cab boasts a high-tech 9" touchscreen that comes standard with voice recognition, CarPlay and wireless charging for your convenience.



### SAFETY COMES STANDARD.

The GWM P-Series Passenger Double Cab is perfectly equipped with several active safety features. These include 7 airbags, up/downhill assist control and vehicle stability control.



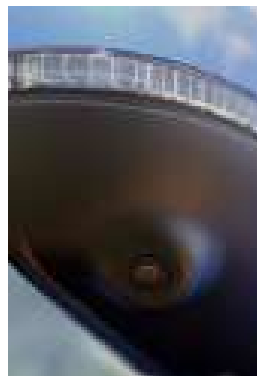
### ACCESSIBILITY (OPTIONAL).

The retractable rear step (Optional Extra) makes getting in and out of the load bin easy and efficient. For extra value and accessibility, this bakkie boasts a dampened tailgate and drop-in bed liner.



### CLASSY COMFORT.

For a luxurious SUV like feel, some general soft-touch finishes include bronze dash inserts which are included on the seat trim and the cross-stitched design patterns on the side panels.



### BLINDSPOT WARNING AND REAR CROSS TRAFFIC ALERT.

Blindspot warning works together with an RCTA (Rear Cross Traffic Alert). Blindspot warning (BSM) helps the driver detect the presence of another vehicle in the blind spot, it optimises driver safety and gives you added confidence while on the move.



## **SAFETY COMES FIRST.**

### **Lane Support System**

This is a high-tech safety system that includes Lane Departure Warning (LDW), Lane Keeping Assist (LKA) and Lane Center Keeping. They all work together to prevent you from unintentionally drifting out of your lane.

### **Lane Departure Warning**

The LDW system is a passive safety feature that alerts you when your bakkie is approaching or crossing a lane without an indicator active.

### **Lane Keeping Assist**

Lane Keeping Assist actively steers your bakkie back into its lane or activates the brakes to avoid collision.

### **Lane Centre Keeping**

LCK is a safety system that keeps the bakkie centered in your lane, even at highway speeds.

### **AEB (Autonomous Emergency Braking) Pedestrian & Cyclist**

This active safety system avoids collisions by detecting pedestrians or bicyclists and automatically activates the brakes.

### **Rear Crossing Traffic Alert**

With the use of radar sensors on the bakkie, the rear cross traffic alert prevents you from reversing into cars by alerting you when vehicles are detected from behind.

### **Traffic Sign Recognition**

Helps you identify road signs such as stop & yield, increasing awareness & safety.

### **Adaptive Cruise Control (ACC)**

The ACC automatically adjusts the vehicle speed to maintain a safe following distance.



**220V POWER OUTLET.**



**SMART KEYLESS ENTRY AND  
A PUSH START BUTTON.**



**AUTO-DIMMING MIRROR &  
DASHCAM POWER OUTLET.**

# SPEC SHEET

Cabin type	DOUBLE CAB: PASSENGER			
	8AT			
	2WD		4WD	
Transmission				
Drivetrain				
Configuration	LS	LT	LS	LT
<b>Chassis &amp; Steering</b>				
Front Suspension: Double Wishbone	✓	✓	✓	✓
Rear Suspension: Leaf Spring Rigid Axle	✓	✓	✓	✓
Electric Power Steering	✓	✓	✓	✓
Disc Brake-Rear	✓	✓	✓	✓
<b>Exterior Spec</b>				
265/60 R18 Alloy Rim	✓	✓	✓	✓
Chrome finish Door Handle & Mirrors	✗	✓	✗	✓
Chrome Styling Bar	✗	✓	✗	✓
Plastic Drop-in bedliner	✓	✓	✓	✓
Easy lift Tailgate	✓	✓	✓	✓
<b>Interior Spec</b>				
Instrument Cluster-3.5"	✓	✗	✓	✗
Instrument Cluster-7"	✗	✓	✗	✓
220V Power	✗	✓	✗	✓
Manual Tilt Telescopic Steering Adjustment	✓	✓	✓	✓
Leather Steering Wheel	✗	✓	✗	✓
<b>Driving Dynamics</b>				
TOD (Torque on Demand) 4wd System	✗	✗	✓	✓
Rear Differential Lock	✓	✓	✓	✓
Driving Mode: Standard, Eco & Sport	✓	✓	✗	✗
Driving Mode: Standard, Eco,Sport+4L	✗	✗	✓	✓
Steering Sensitivity Adjustable	✓	✓	✓	✓
Electronic Parking Brake	✓	✓	✓	✓
Rear view camera + Guidelines	✓	✓	✓	✓
Dynamic Steering Torque	✓	✓	✓	✓
Cruise Control	✓	✗	✓	✗
<b>Technological Intelligence and Safety</b>				
Adaptive Cruise Control	✗	✓	✗	✓



# SPEC SHEET

Lane departure warning + Lane keeping + Lane centre keeping	✗	✓	✗	✓
Forward Collision Warning & Auto Emergency Braking	✗	✓	✗	✓
Traffic Sign Recognition	✗	✓	✗	✓
Bluetooth	✓	✓	✓	✓
Wireless Power Charger	✗	✓	✗	✓
Voice Recognition	✗	✓	✗	✓
<b>Seating</b>				
Leather Seats	✓	✓	✓	✓
Electric & 6 way Driver Adjustable	✗	✓	✗	✓
Electric & 4 way Driver Adjustable	✗	✓	✗	✓
Seat Heating (Front)	✗	✓	✗	✓
<b>Active and Passive Safety</b>				
Abs+Electronic Brake Distribution	✓	✓	✓	✓
Traction control+ Roll over mitigation + Brake Assist System	✓	✓	✓	✓
Hill Assist and Descent Control	✓	✓	✓	✓
Rear Cross Traffic Alert	✗	✓	✗	✓
360 Degree Camera	✗	✓	✗	✓
Tyre Pressure Monitor System	✓	✓	✓	✓
Air Bag:Dual+Front Side+Curtain+Front Central	✓	✓	✓	✓
Isofix	✓	✓	✓	✓
<b>Immobilizer Spec</b>				
Engine Immobilizer	✓	✓	✓	✓
<b>Entertainment</b>				
9" Color Multitouch Screen	✓	✓	✓	✓
4 Speaker	✓	✗	✓	✗
6 Speaker	✗	✓	✗	✓
<b>Glass/Door/Mirror</b>				
Inside Rear View Mirror: Electric	✗	✓	✗	✓
Outside Rearview mirror: Electric Adjustable	✓	✗	✓	✗
Outside Rearview mirror: Electric Adjustable & Electric Fold	✗	✓	✗	✓
<b>Lighting</b>				
Led Head Lamp & Auto off	✓	✓	✓	✓
Head Lamp: Electric Height Adjustable	✓	✓	✓	✓
Front Fog Lamp + Auto Direction Light	✓	✓	✓	✓

## SPEC SHEET

Rear Fog Lamp	✓	✓	✓	✓
<b>Air Conditioning</b>				
Auto Aircon	✓	✓	✓	✓
Rear AirCon Duct-Center	✓	✓	✓	✓
<b>Others</b>				
Full Size Spare Tire-Steel	✓	✓	✓	✓

# P-SERIES





**HAVAL**  
Global Intelligent SUV Expert



**ALL-SCENE PARTNER**

[www.gwm.co.za](http://www.gwm.co.za)